

### EXHAUST



**T-7 White**

**Construction:** Medium weight white thermoplastic rubber hose reinforced with a spring steel wire helix.

**Temperature Range (°F):** -40° to 250°

**Standard Color:** White

**Size Range:** 2" to 12" (custom to 24")

**Standard Length:** 25', 50'; 14" & above in 25' only

- Good abrasion resistance
- Designed for applications with wide temperature ranges
- Great moisture & UV resistance
- Excellent chemical resistance
- Smooth interior assures minimal friction loss & efficient air flow
- Manufactured with FDA acceptable materials
- Wall Thickness = .030"

### VACUUM



**FlexStat® CR**

**Construction:** Specially formulated clear static dissipative thermoplastic polyurethane hose reinforced with a rigid white external ABS helix & an embedded copper braided grounding wire.

**Temperature Range (°F):** -40° to 200°

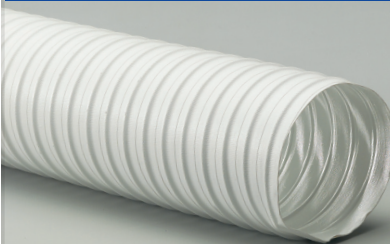
**Standard Color:** Clear with white helix

**Size Range:** 1" to 8"

**Standard Length:** 25', 50'

- Extremely flexible with great abrasion resistance vs. heavy walled PVC
- Smooth interior assures minimal friction loss, efficient air flow & elimination of material build-up
- Enclosed copper braided grounding wire reduces static build-up in material handling applications
- Permanent and non-humidity dependent ESD (electrostatic discharge) protection
- Ideal for clean room and pharmaceutical applications, powder processing and pneumatic conveying systems
- Surface Resistivity Level:  $10^8$ - $10^{10}$  Ohms/Square
- Manufactured with FDA acceptable materials
- Wall Thickness = .040"
- Static conductive cuffs available

### EXHAUST



**White**

**Construction:** Double-ply white acrylic coated polyester fabric hose reinforced with a spring steel wire helix.

**Temperature Range (°F):** -20° to 325°

**Standard Color:** White

**Size Range:** 1.5" to 16" (custom to 24")

**Standard Length:** 25'

- Efficient flow characteristics
- Designed for applications with wide temperature ranges
- Good abrasion resistance
- Ideal for clean room applications
- Manufactured with FDA acceptable materials

### DUST CONTROL



**Flx-Thane® SD**

**Construction:** Medium weight clear static dissipative polyurethane hose reinforced with a bronze coated spring steel wire helix.

**Temperature Range (°F):** -65° to 200°

**Standard Color:** Clear

**Size Range:** 2" to 12"

**Standard Length:** 25', 50'; 14" & above in 25' only

- Great abrasion resistance & high tear strength
- Superior chemical resistance & excellent flexibility
- Designed for applications with wide temperature ranges
- Ideal for clean rooms and material plastic processing applications
- Permanent and non-humidity dependent ESD (electrostatic discharge) protection
- Surface resistivity level:  $10^8$ - $10^{10}$  Ohms/Square
- Manufactured with FDA acceptable materials
- Wall Thickness = .030"
- Available with factory-installed 2" clear soft cuffs

