

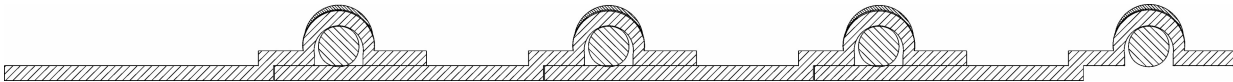


## ENGINEERING AND TECHNICAL DATA

Flexadux<sup>®</sup> R-7

March 2007

**Construction:** Medium weight PVC hose reinforced with a spring steel wire helix & external wearstrip



### **Product Features:**

- “ Good for positive pressure applications
- “ Good compressibility
- “ Ideal for dust and woodworking applications
- “ Good chemical & moisture resistance
- “ Wearstrip offers additional external abrasion & drag resistance

**Applications:** Recommended for dust control and light bulk material handling applications.

**Temperature Range:** 20°F to 160°F

**Diameter Range (Inches I.D.):** 2.00-12.00 Inch I.D., Custom to 24 Inch I.D.

**Standard Length:** 25 & 50 Feet

**I.D. Tolerances (Inches):** To 8 Inch: -0.00 to +0.125 Inch  
8 Inch and over: -0.00 to +0.250 Inch

**Standard Color:** Clear with blue wearstrip

**End Finish:** Plain Cut

**Markets:** “Abrasion Resistance “Chemical Fumes “Dust Collection “Fume Exhaust “Industrial “Meat Packing “Pharmaceutical “Pollution Control “Sheet Metal “Starch Transfer “Welding “Woodworking/Furniture Industries



A **SCHAUBURG** HOSE TECHNOLOGY COMPANY

1510 Armstrong Road, P.O. Box 4275  
Warsaw, IN 46581-4275

Telephone 574-267-7909 • Toll Free 800-343-0428 • Fax 574-269-7491 • Toll Free Fax 800-382-8464  
sales@flexaust.com • www.flexaust.com



## ENGINEERING AND TECHNICAL DATA

### Flexadux<sup>®</sup> R-7

(Page 2)

March 2007

SIZE INSIDE DIMENSION (INCHES)	APPROXIMATE WEIGHT (LBS./FT.)	MINIMUM CENTERLINE BEND RADIUS (INCHES)	COMPRESSION RATIO	MAXIMUM RECOMMENDED NEGATIVE PRESSURE (IN./HG.)	MAXIMUM RECOMMENDED POSITIVE PRESSURE (PSI)
2	.32	2	2:1	29	25
3	.47	3	2:1	29	16
4	.76	3.5	2:1	29	15
5	1.05	4.3	2:1	16	13
6	1.02	5	3:1	8	8
8	1.37	8	3:1	3.5	6
10	2.3	10	3:1	9	6.6
12	2.7	12	3:1	5	5.5

Note: Technical data based on 2 ft. straight lengths of hose @ 72° F.

Disclaimer: The proper use and maintenance of hose and/or duct manufactured by Flexaust is the sole responsibility of the purchaser and ultimate user of the product. This information is presented as a general guide only. The number of variables which can be present in any application make firm recommendations impossible. Adequate testing under actual service conditions is necessary to properly establish suitability. We take pride in the quality of all Flexaust products and we welcome comments and suggestions from our customers.



A **SCHAUBURG** HOSE TECHNOLOGY COMPANY

1510 Armstrong Road, P.O. Box 4275

Warsaw, IN 46581-4275

Telephone 574-267-7909 • Toll Free 800-343-0428 • Fax 574-269-7491 • Toll Free Fax 800-382-8464

sales@flexaust.com • www.flexaust.com